



## Continuous Drier - Single Flow

'Single Flow' is the simpler version of the unique Alvan Blanch Double Flow system - lower capacities – but offering the same key benefits:



SF6600 Model

- Boosted airflow
- Step-less speed control for optimum accuracy
- Instant follow-on
- Precise and consistent drying
- Full access to all compartments
- Handles any granular material in any condition
- Low installation cost
- Built to last
- Easy transportation
- No trapping of trash

### Application:

Single flow driers can be used for a wide range of products - including, woodchips, steam flaked maize as well as whole grains and pulses of every type, cocoa and coffee beans etc.

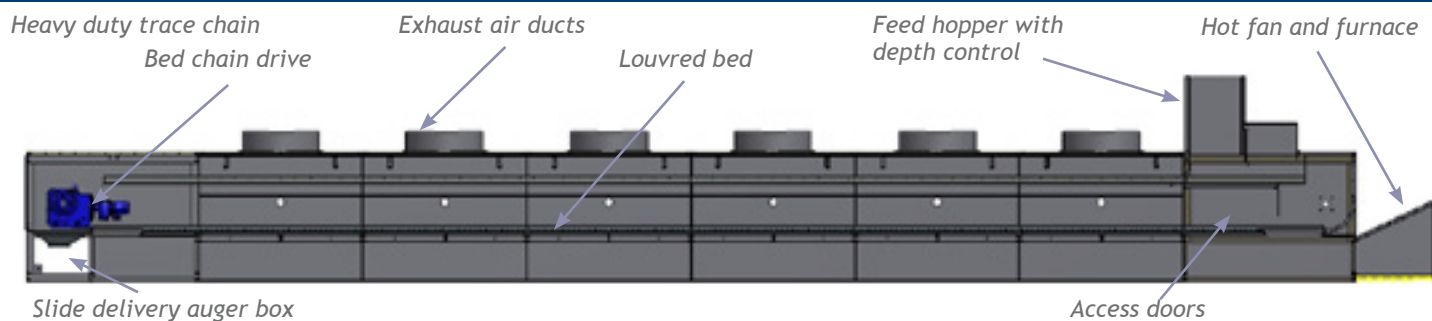
### Construction:

The driers are pre-assembled so that, upon arrival on site, the drier can be immediately placed into position.

As soon as the exhaust air ducts, fuel supply pipeline and power cables have been connected the drier is ready for operation.

Cont.>

# Continuous Drier - Single Flow



The heavy duty welded construction and the use of top quality components throughout means that, like all Alvan Blanch driers, these machines will give reliable service over many decades.

## Operation:

The product is drawn from the feed hopper by means of the top return chain, before falling onto the start of the drying bed. The variable speed bed conveyor chain gives precise control of drying duration. The required depth of bed is easily adjusted to suit the type and condition of the product. The high volume of hot air from the quiet and efficient backward curved centrifugal fan is blown through the unique Alvan Blanch galvanised louvred drying bed. In the final bed section a high volume of cold air is blown through the product before it leaves the drier. Exhaust air from the drier is conveyed outside the building by simple ducts.

## An example of the products dried

Barley	Oats
Barley Flakes	Paper Sludge
Borage	Peas/beans
Bread Crumbs	Pellets
Cocoa beans	Rapeseed
Coffee beans	RDF
Compost	Rice
Glass	Soya
Limestone	Sorghum
Maize	SRF
Maize (flaked)	Wheat
MSW	Woodchip
Grass Seed	Pyrethrum
Herbs	Rape Seed

With such a low profile design, the drier can fit within almost any warehouse and can be positioned on a standard concrete floor without special foundations.

## Heat Sources:

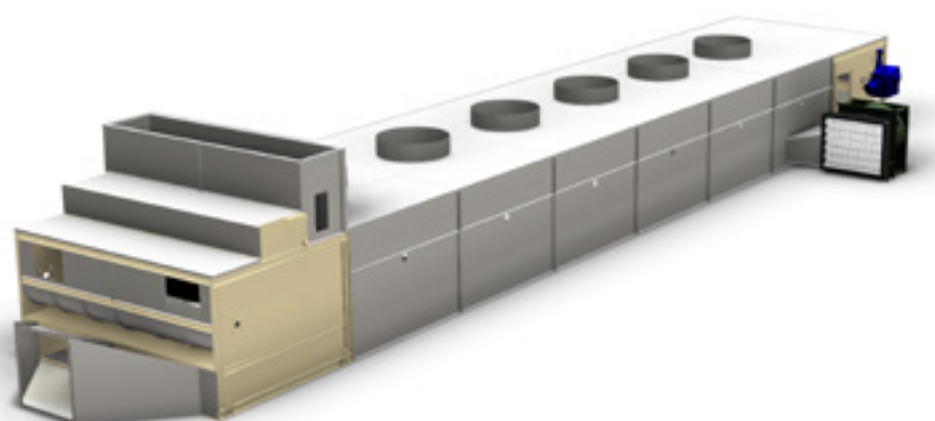
Multiple heat sources can be used such as diesel or gas burners (natural, LPG, biogas), biomass, CHP (direct or indirect), hot water, steam waste heat (low or high grade). These driers are particularly suited to drying at low temperatures.

## SPECIFICATIONS

Model	Drier Capacity* (t/hr)	Approximate Total Electrical Power (KW)	Overall Dimensions L x W x H
SF3600	4.5	10.0	12.8m x 1.2m x 2.4m
SF6600	6.0	16.5	12.8m x 2m x 2.4m
SF9800	10.7	26	12.8m x 2.6m x 2.4m
SF12200	13.4	40	12.8m x 3.5m x 2.4m
SF14700	16.1	45	12.8m x 4.9m x 2.4m
SF22800	25	65	21.2m x 3.5m x 2.4m
SF27300	30	85	21.2m x 4.9m x 2.4m
SF29800	32.7	90	27.5m x 2.5m x 2.4m



Louvred bed



In accordance with our policy of continuous development, we reserve the right to change specifications and prices at any time without notice or incurring liability to purchasers. All goods supplied according to our published terms and conditions of sale (copies on application)

**AB ALVAN BLANCH**  
Processing the World's Crops - Since 1952

Chelworth, Malmesbury, Wiltshire, SN16 9SG. England

T: +44 (0) 1666 577333 F: +44 (0) 1666 577339 E: info@alvanblanch.co.uk W: www.alvanblanchgroup.com