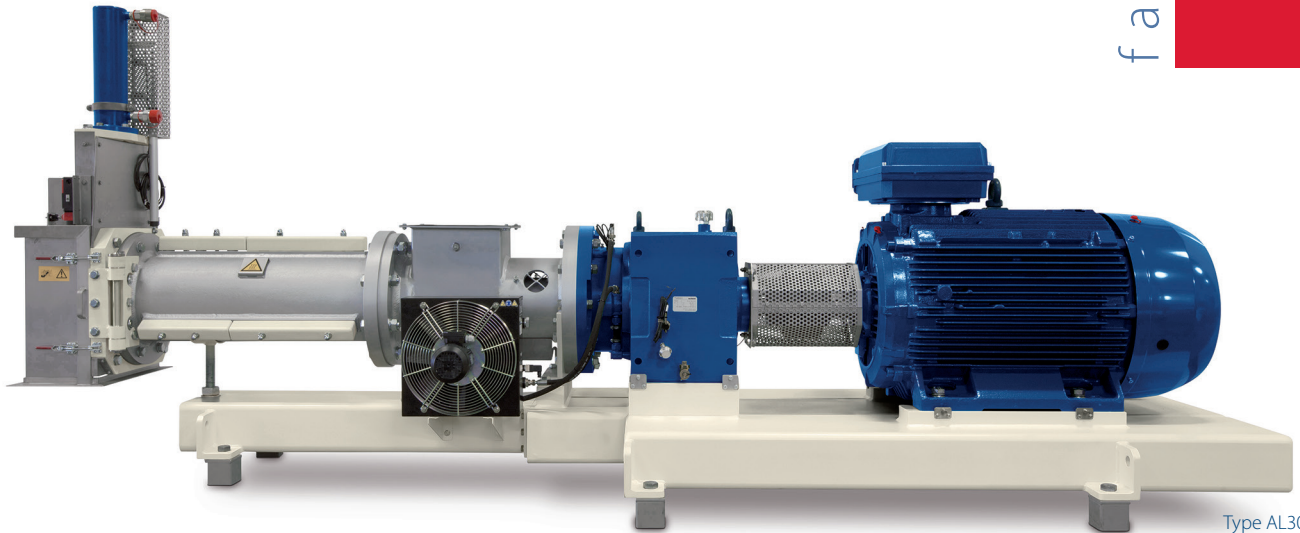




Expanders



Type AL300

General

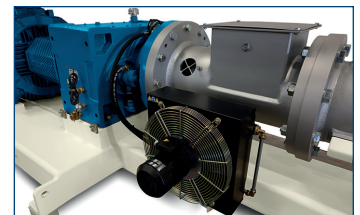
Almex offers a range of expanders which improve the quality of finished feed as well as more efficient production process flow.

The Almex Contivar expanders have a reliable and sturdy design and are equipped with an unique Active Disk system (AD-system) in order to control exact product output and assure the quality of the product. The AD-system is easy to control and it is easy to exchange wear parts.

The robust and simple design of the Almex Contivar guarantees years of trouble free and economical production.



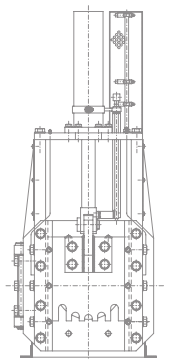
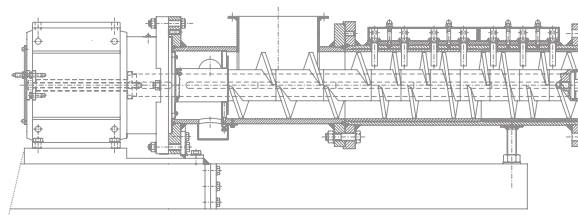
Feeder and insulated Conditioner with steamkit to be placed on top of the expander.



Drive with combined gearboxbearing assembly

Features

- » Eliminate heat sensitive bacteria (salmonella)
- » Addition of higher fats and liquids inclusions
- » Gelatinization of available starches
- » Improved end product durability and strength
- » Increased output of pellet mill
- » Reduces wear costs of pellet mill
- » Improved water stability for fish feed
- » Enhanced oil extraction
- » Easy cleaning
- » Less downtime for maintenance
- » Low cost of wear parts



Type	Main motor (kW)	Motor slide adjustment (Motorpower kW)	Expander barrel diameter (mm)	Capacity (ton/hour)
AL150	45-75	0.55	150	1-6
AL200	75-132	0.55	200	5-10
AL300	132-315	0.75	300	10-30
AL350	315-400	0.75	350	30-45

Almex b.v.

Zutphen - The Netherlands
 Tel.: +31 (0)575 57 26 66
 info@almex.nl

..... www.almex.nl



Extruders and Expanders

ALMEX
extrusion techniques

Almex b.v.
Verlengde Ooyerhoekseweg 29
7207 BJ Zutphen
The Netherlands

E info@almex.nl
I www.almex.nl
T +31 (0)575 57 26 66
F +31 (0)575 57 27 27