

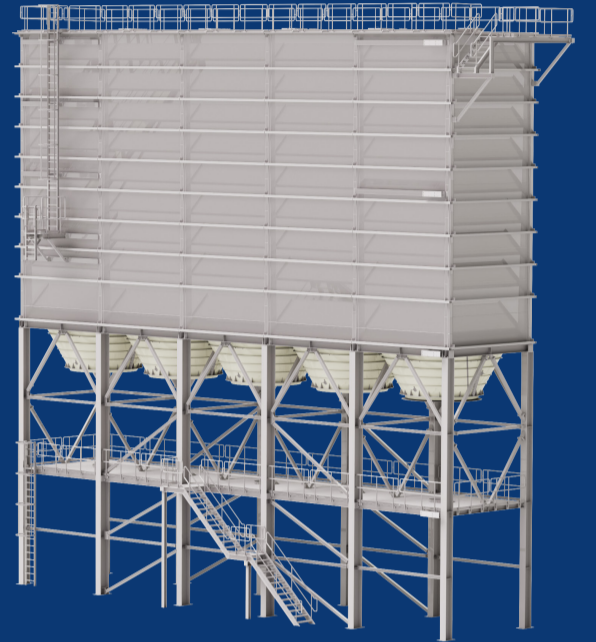


SETS THE STANDARD IN SQUARE SILOS

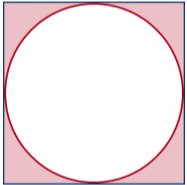
TSC SILOS

For over 25 years, TSC Silos has been engineering and delivering square silo systems worldwide. Serving a wide range of industries. We provide efficient and tailor-made storage solutions for dry bulk goods.

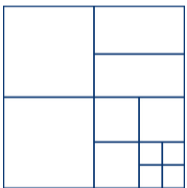
With an in-house team of specialists, we advise, design, calculate, manufacture, assemble and install square silos. Our silo system is the best solution when it comes to dry and granular bulk goods.



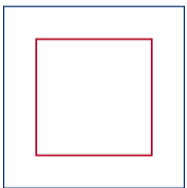
Why a square silo?



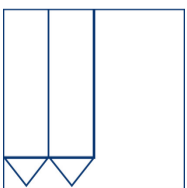
A square silo has over 25% more storage capacity compared to a round silo. Simply because the entire available surface area is used.



Thanks to its modular structure with variable cell dimensions and shared wall principle, different products, grades and origins can be stored simultaneously within the same footprint. This provides maximum flexibility.



Square silos can also form a structural part of the building. Machine floors, stairs and wall cladding can be connected directly to the silo.



Due to the customized and modular design, TSC silos always fit perfectly with your production process.



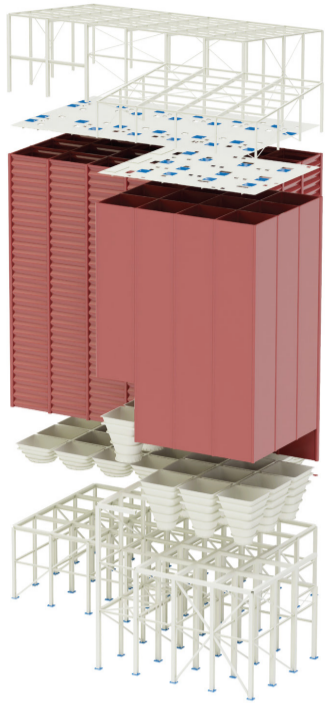
"Square silos are designed following your process"



**SETS THE STANDARD
IN SQUARE SILOS**

What we can deliver

A fully engineered silo, as an integrated structure



Roof Construction

Bin Roof

Smooth Walls

Profiled Walls

Hoppers

Steel Construction

Overview of different hoppers

Always the best-fit design for your process

Classic Square

Speedwell Hopper

Bolted Hopper

Classic Round

Multi Outlet Hopper

Personalized Options



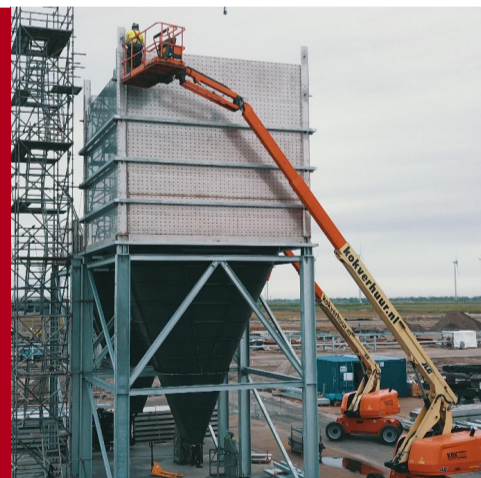
Integrated construction

Our silos can be a fully integrated, static part of the building. This way, the available space is used optimally for maximum capacity. We can seamlessly integrate related steel constructions and mount cladding directly onto our silos.



Speedwell Hopper

Going from square to round, our Speedwell Hopper is designed to ensure mass flow. It comes into its own particularly for powder-like materials. Literally eliminating a potential bottleneck in your process.



1 to 206 bins

Our square silos are already successfully integrated into factories worldwide. From individual silo bins with load cells for carbon black, to a state-of-the-art premix plant with 206 bins for minerals. The diversity in projects is enormous.



Bolted hopper system

The bolted hopper is an innovative approach to build square silos with seamless integration of the hopper with the structural column. Benefits include reduced installation time, no hot work permits required, and no damage to the protective coating. Ensuring a minimum impact on factory operations.



With our knowledge of the engineering and delivery of square silos, we take process storage to a higher level.

TSC Silos

Tweede Broekdijk 3

info@tsc-silos.com

CoC: 08079214

7122 LB Aalten

+31 (0)543 47 39 79

VAT: NL8072.24.017.B01

The Netherlands

www.tsc-silos.com